

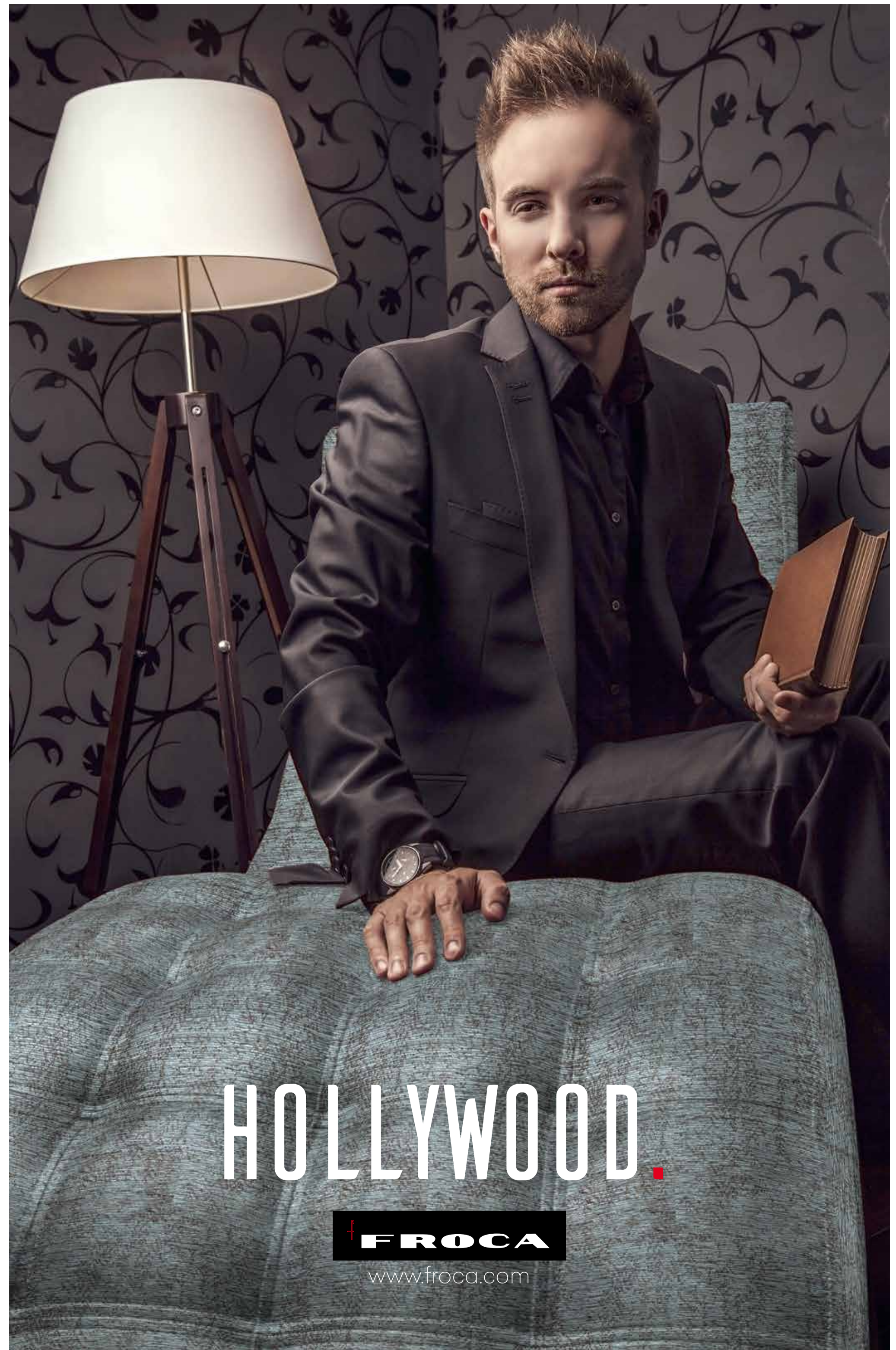
FROCA

HOLLYWOOD.

FROCA



www.froca.com



HOLLYWOOD.

FROCA

www.froca.com



MENDES 1



ESTEPA 18



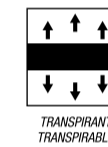
REDFORD 1



ESTEPA 49



NEWMAN 1



TRANSPARENT
TRANSPIRABLE



JACQUARD



TEXTILES
DE CONFIANZA
Control de resistencia mecánica
según CEN EN ISO 9001
2008/AN004



MACHINE WASHABLE
LAISIBLE EN MACHINE



www.froca.com



TEXAS 3



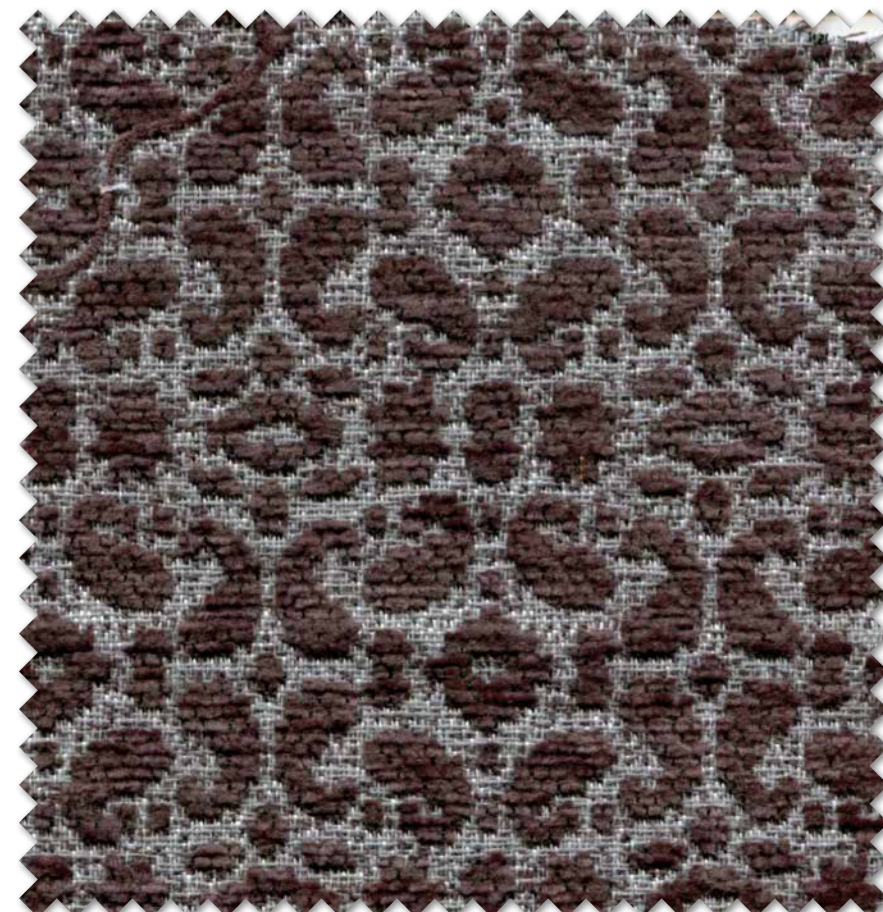
COSTNER 1



www.froca.com

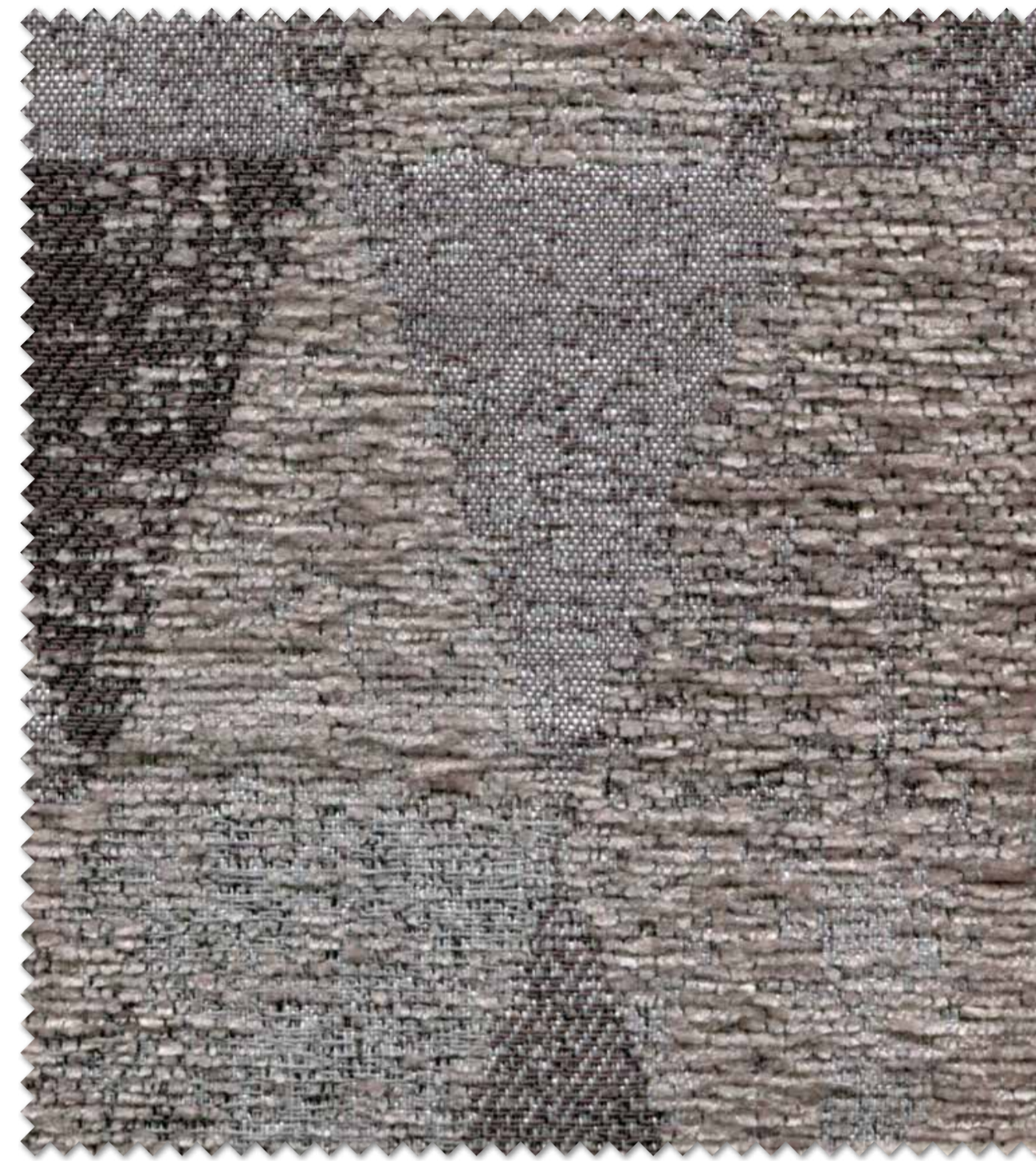


TEXAS 2



KIDMAN 1

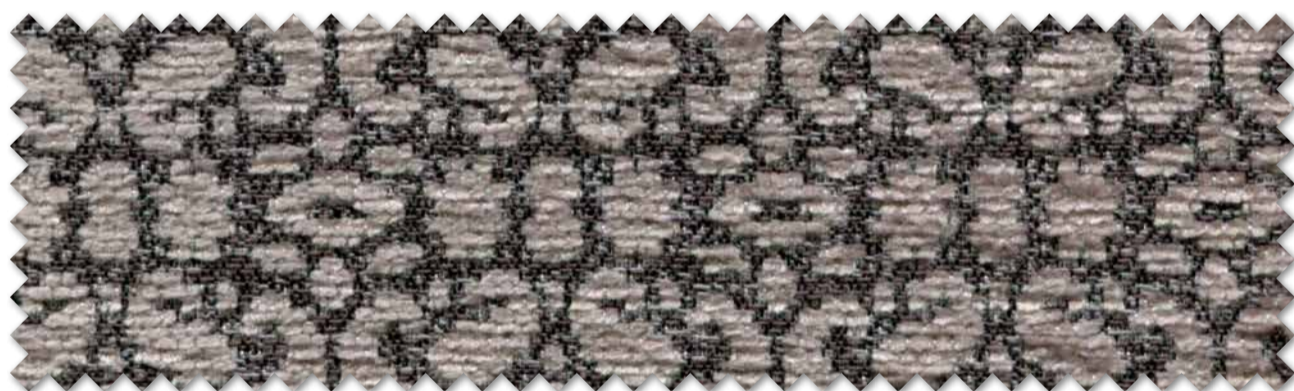




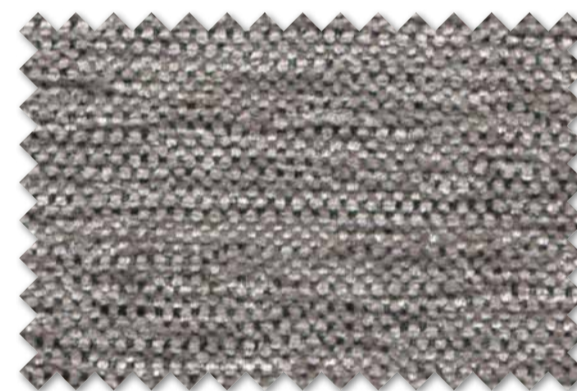
NEWMAN 2



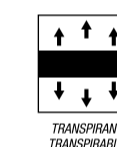
COSTNER 2



KIDMAN 2



ESTEPA 22



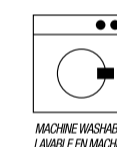
TRANSPARENT
TRANSPARENT



JACQUARD



TEXTILES
DE CONFIANZA
Control de sustancias nocivas
según EN14120 y EN14126
2004/2004



MACHINE WASHABLE
LAVABLE EN MACHINE



TEXAS 2



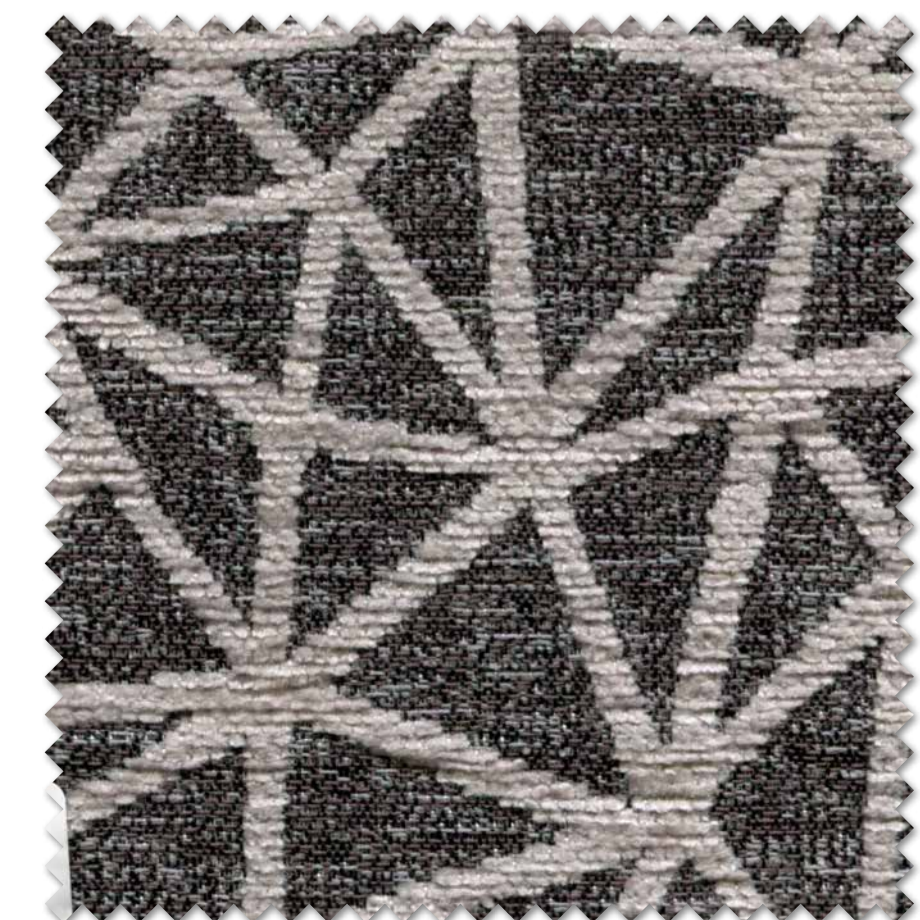
ESTEPA 18



MENDES 2



TEXAS 3



REDFORD 2



ESETPA 30



ESTEPA 28



KIDMAN 3



NEWMAN 3



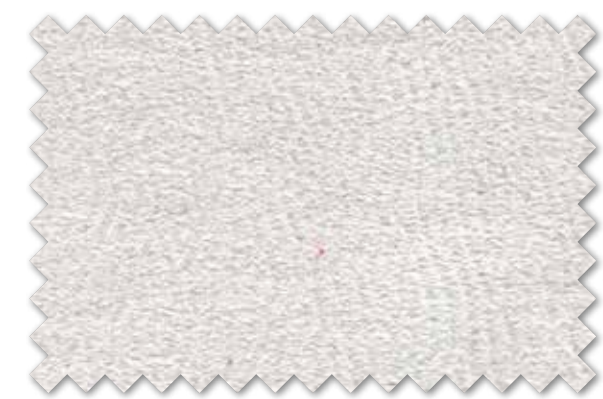
REDFORD 3



MENDES 3



TEXAS 7



TEXAS 4



COSTNER 3

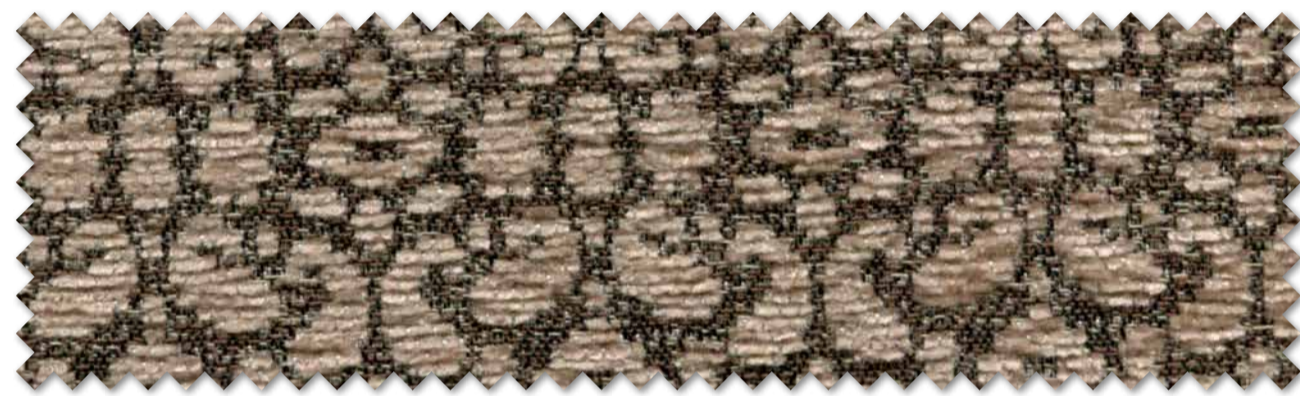




MENDES 4



ESTEPA 40



KIDMAN 4



www.froca.com



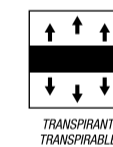
NEWMAN 4



TEXAS 5



COSTNER 4



www.froca.com



REDFORD 4



TEXAS 9



ESTEPA 30



ESTEPA 28





FROCA

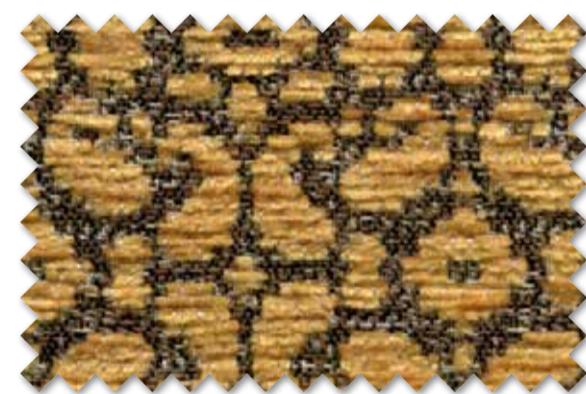
www.froca.com



MENDES 6



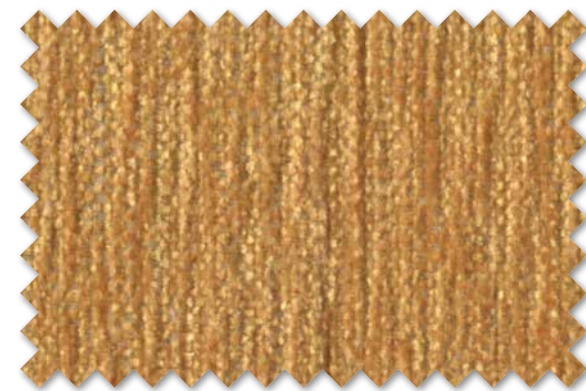
ESTEPA 28



KIDMAN 6



TEXAS 9



ESTEPA 49



TEXAS 7



REDFORD 5



KIDMAN 5



TEXAS 6



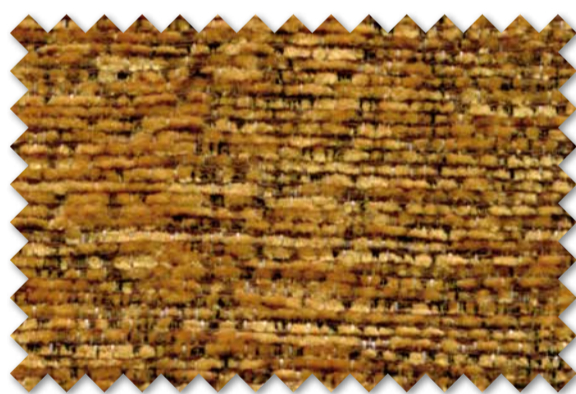
COSTNER 5



NEWMAN 5



MENDES 5



COSTNER 6



COSTNER 5



TEXAS 14



NEWMAN 6

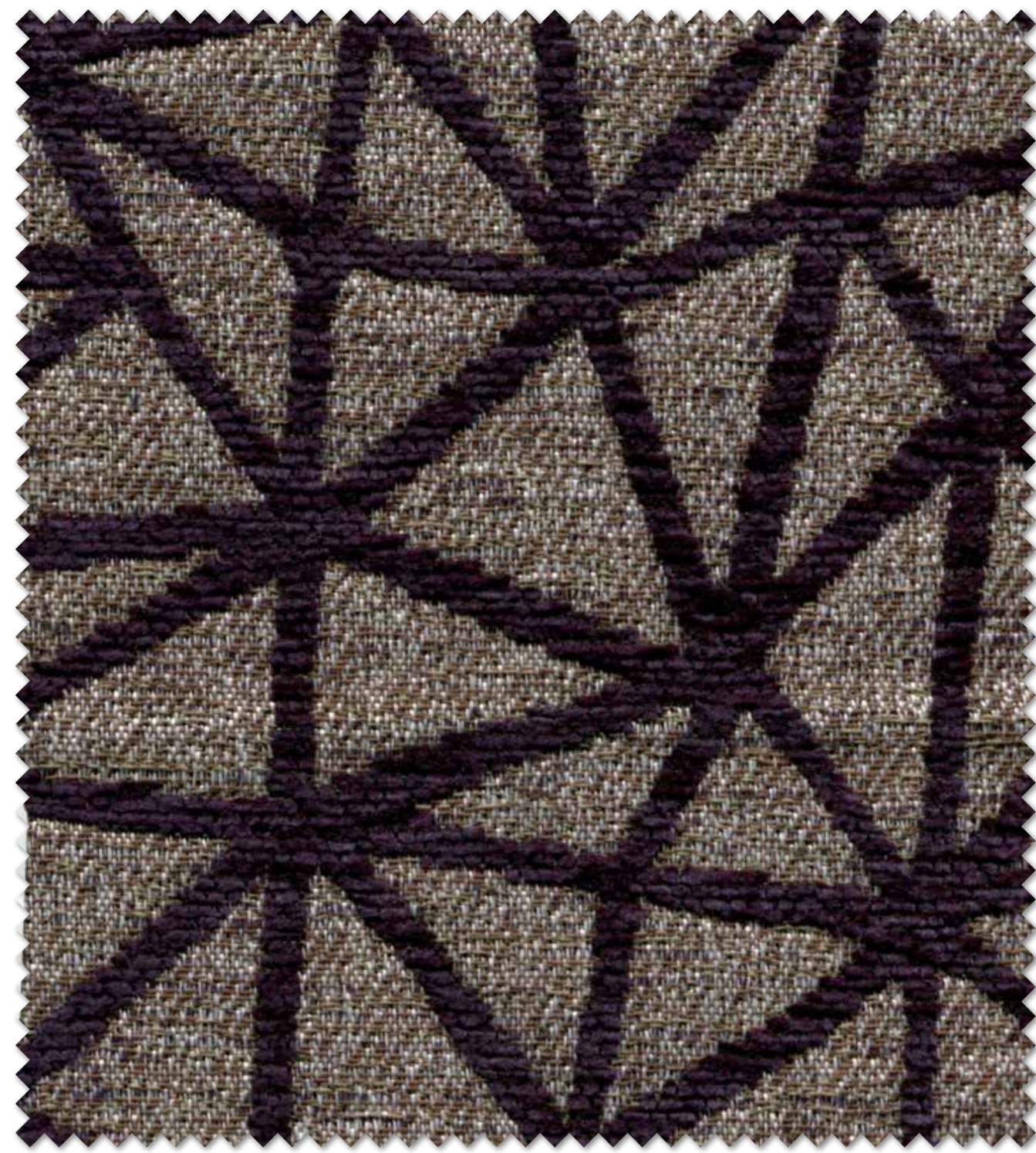


REDFORD 6





COSTNER 7



REDFORD 7



ESTEPA 40



ESTEPA 28



ESTEPA 45



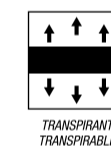
MENDES 7



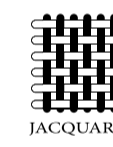
KIDMAN 7

FROCA

www.froca.com



TRANSPARENT
TRANSPARENT



JACQUARD



TEXTILES
DE CONFIANZA

Control de sustancias nocivas
según Oeko-Tex® Standard 100
ZD004N364 ATEX



MACHINE WASHABLE
LAVABLE EN MACHINE

FROCA

www.froca.com



TEXAS 7



TEXAS 9



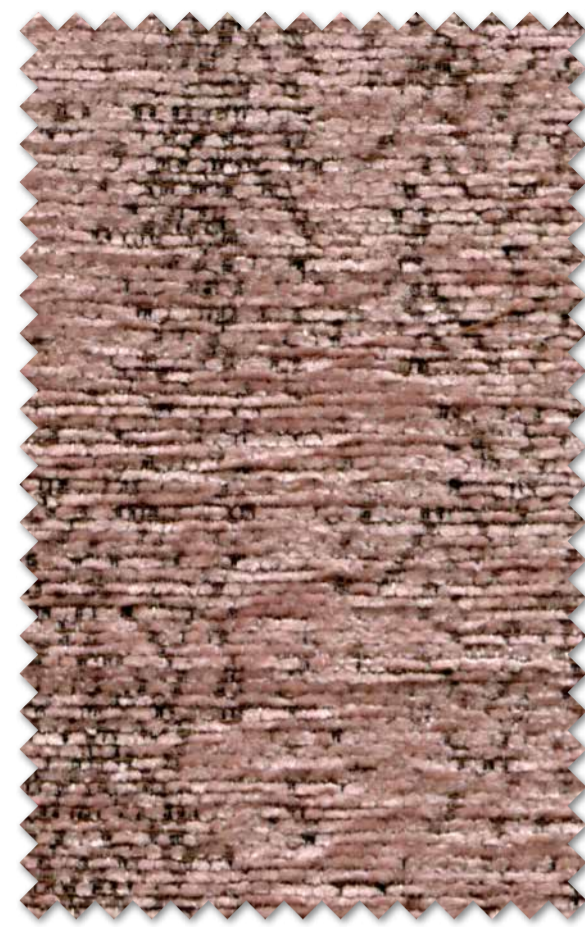
NEWMAN 7



NEWMAN 8



ESTEPA 28



COSTNER 8

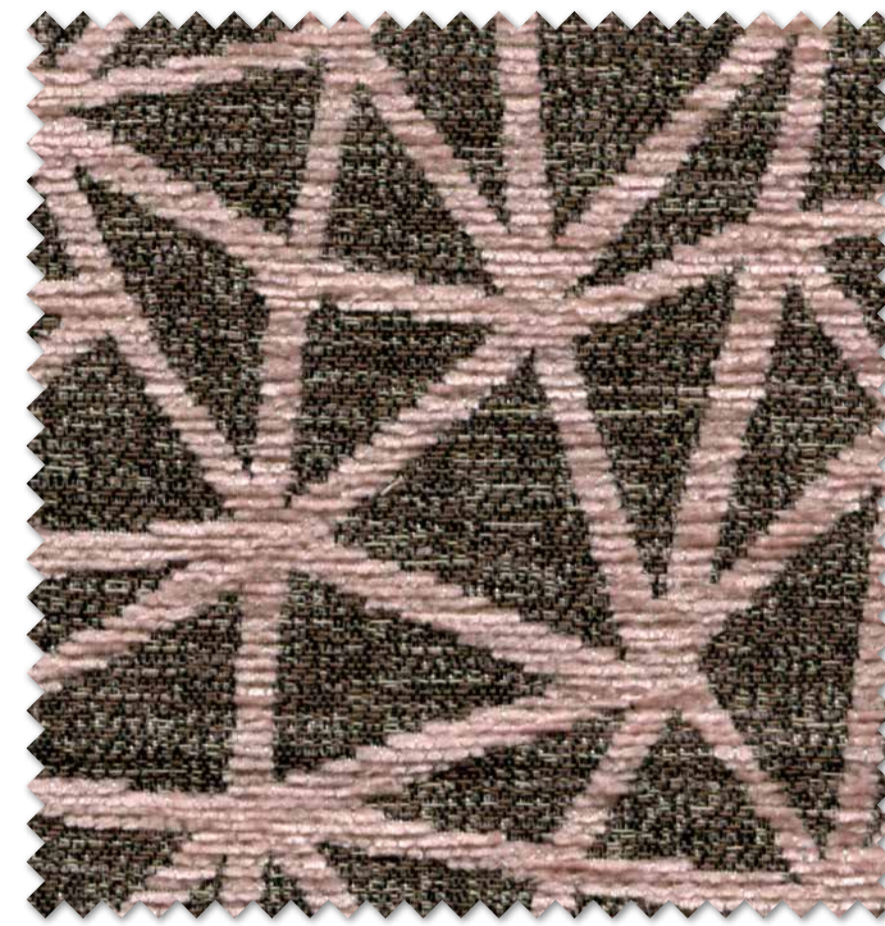


TEXAS 9

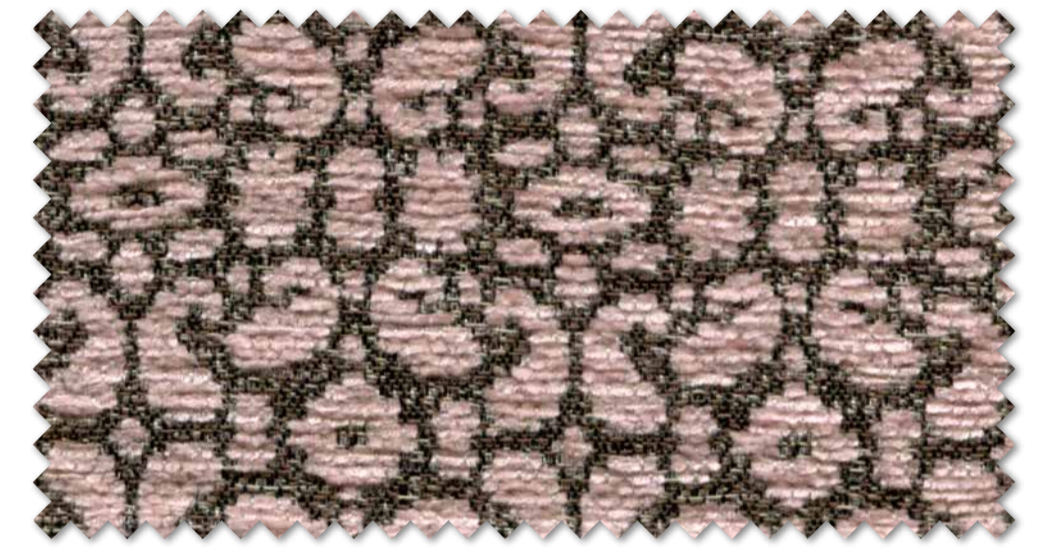
FROCA
www.froca.com



TEXAS 6



REDFORD 8



KIDMAN 8



FROCA
www.froca.com



ESTEPA 41



MENDES 8



REDFORD 9



TEXAS 6



MAN
L: 9
140 CMS
Pes -43% Pac
Cot.
/m2- 530 gr./ml
[Icons: Steam, P, Mail]

NEWMAN 9



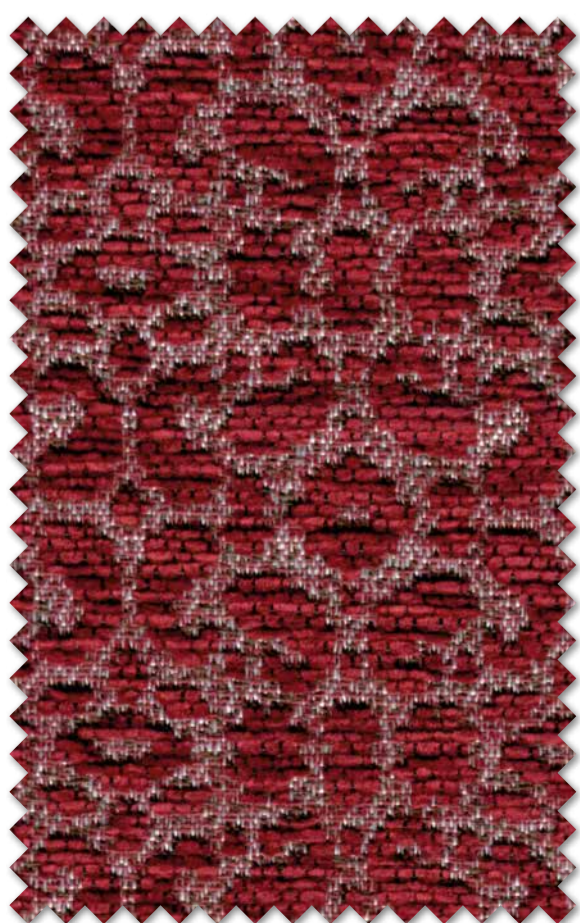
ESTEPA 46



MENDES 9



ESTEPA 28



KIDMAN 9



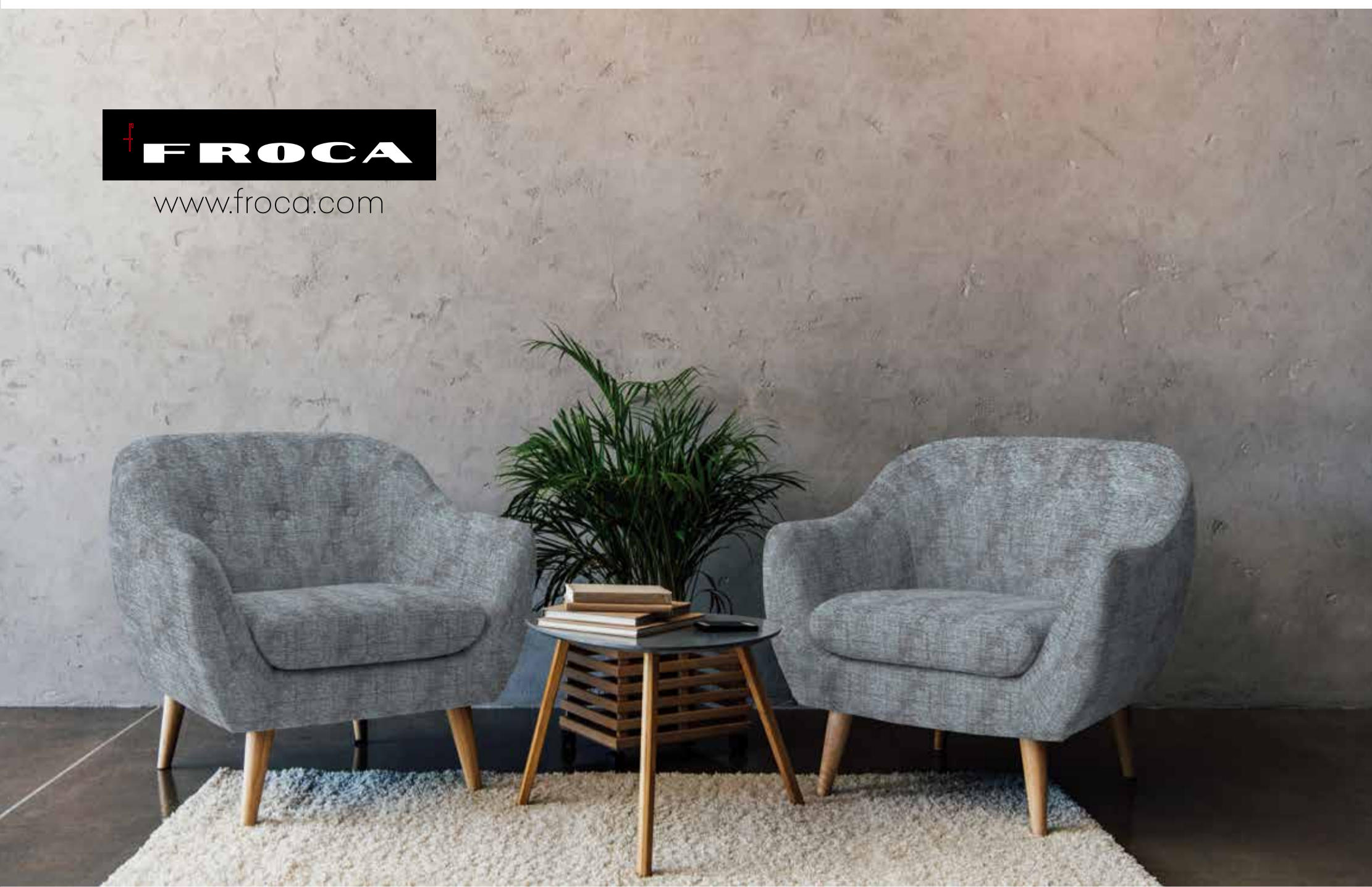
www.froca.com



COSTNER 9



www.froca.com



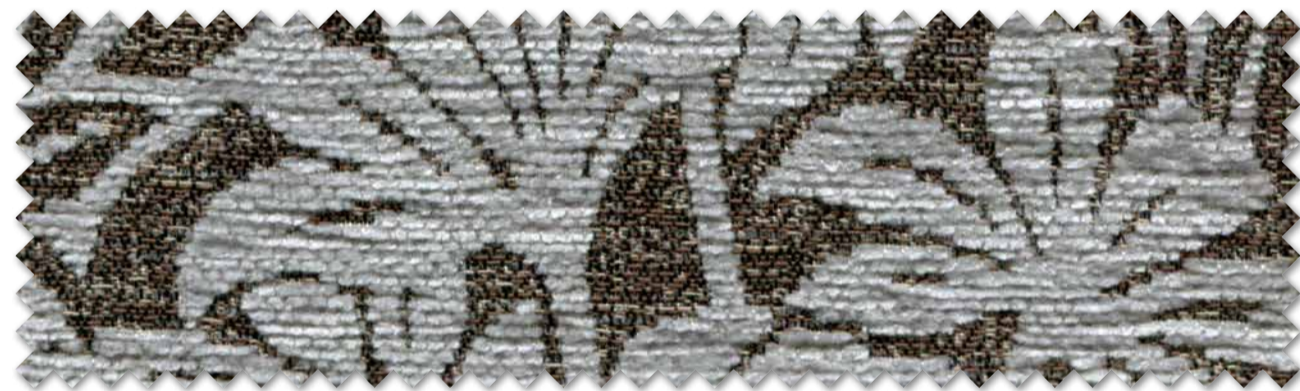
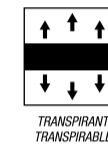
ESTEPA 42



ESTEPA 28



REDFORD 10



MENDES 10



ESTEPA 24



NEWMAN 10



TEXAS 7



TEXAS 9



KIDMAN 10



COSTNER 10

N
MS
3% Pac
630 gr./ml





ESTEPA 40



NEWMAN 11



REDFORD 11



TEXAS 5



MENDES 11



ESTEPA 51



TEXAS 9



KIDMAN 11



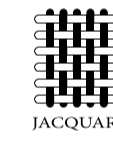
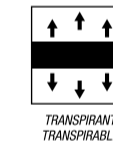
ESTEPA 28



TEXAS 7



COSTNER 11



www.froca.com



www.froca.com



MENDES 12



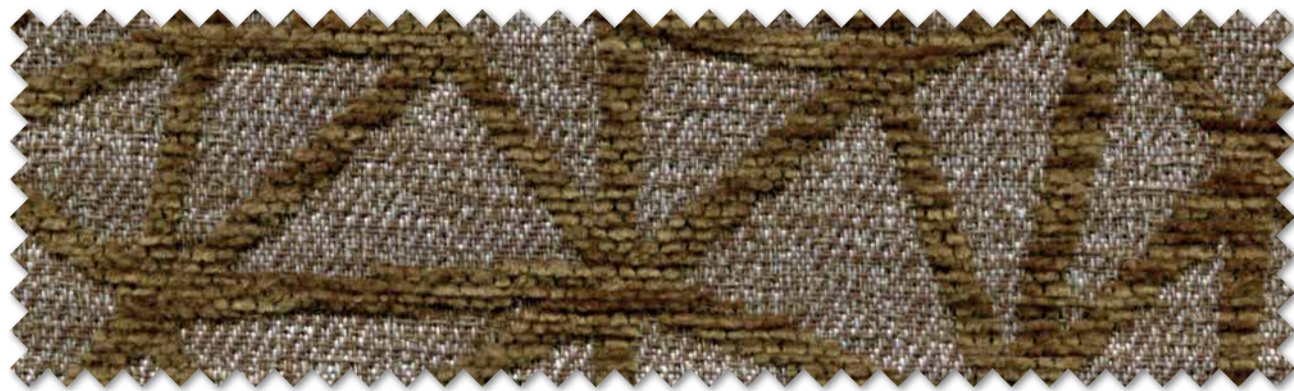
ESTEPA 50



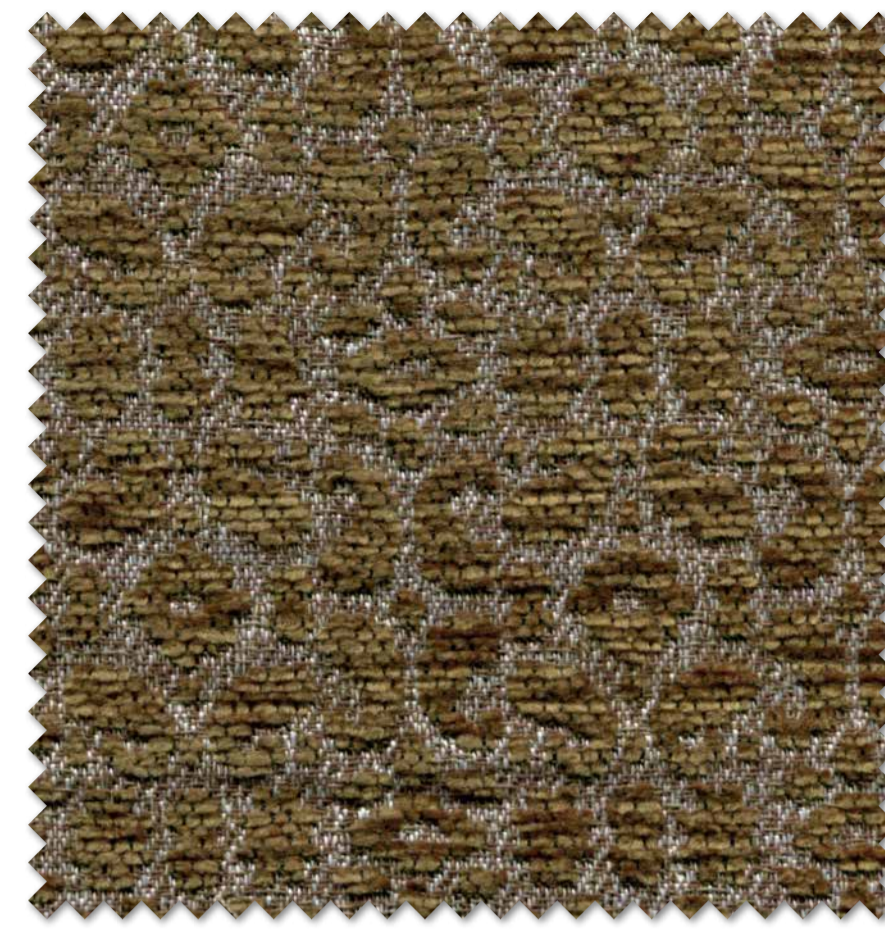
ESTEPA 28



ESTEPA 40



REDFORD 12



KIDMAN 12



TEXAS 7



NEWMAN 12



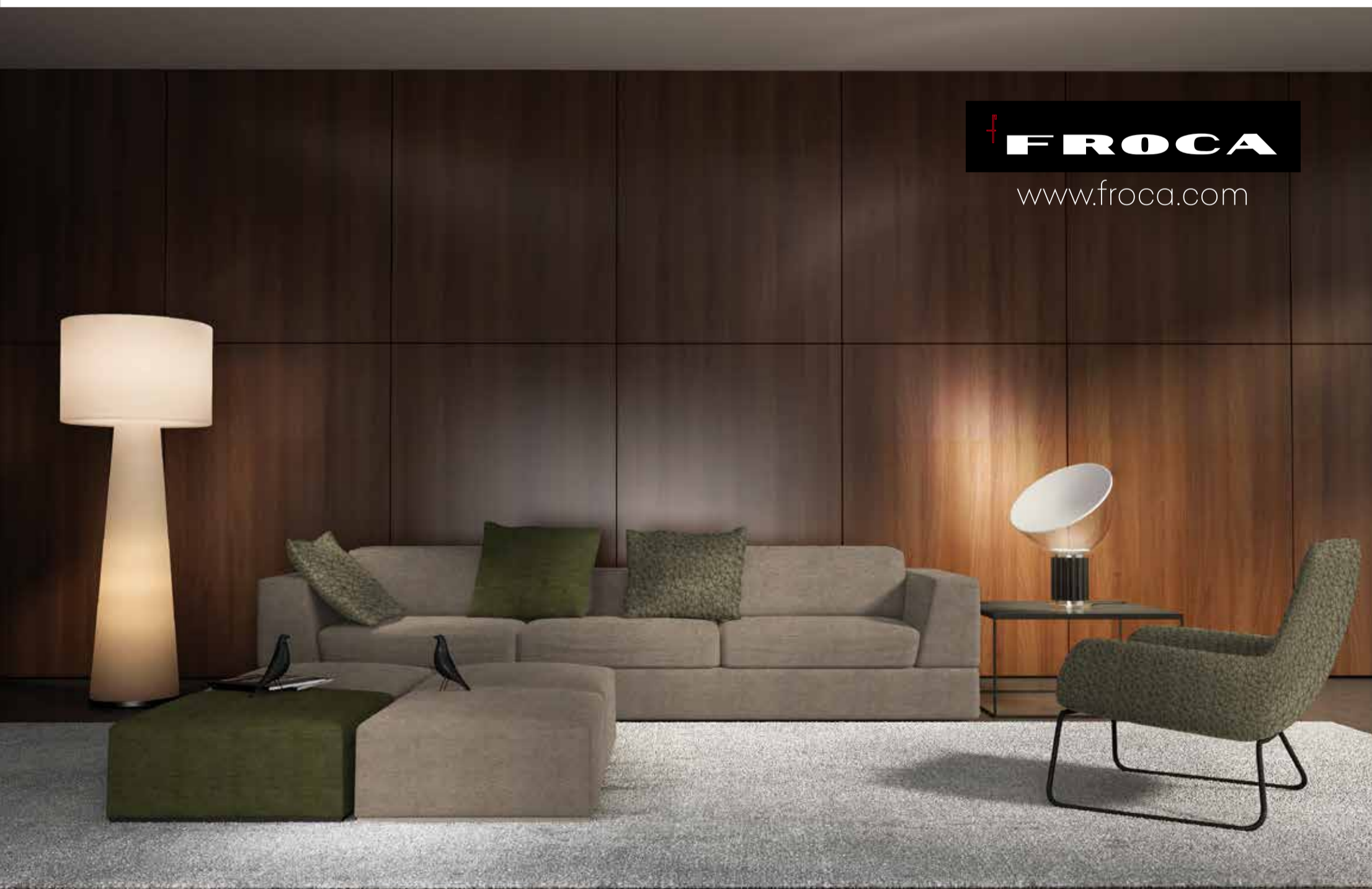
COSTNER 12



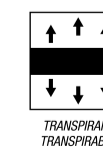
TEXAS 15



TEXAS 6



FROCA
www.froca.com



FROCA

www.froca.com

especificaciones técnicas.

technical specifications · spécifications techniques

kidman. costner. redford. mendes. newman.

COMPOSICIÓN Composition / Composition	43% PES. 43% PAC. 14% COT.	
ANCHO Width / Largeur	140 cm · 54 in.	
PESO Weight / Poids	530 gr/m ² · 380 gr/ml	
RESISTENCIA DE LAS COSTURAS Seam strength / Résistance des coutures	Urdimbre Warp Châine 1.8 mm Trama Weft Trame 2.0 mm	BS 3320:1988 ISO 13934-2 BS 2543:1995 ISO 13934-2
RESISTENCIA A LA ABRASIÓN Abrasion resistance / Résistance à l'abrasion	> 32.000 Ciclos Cycles Cycles	ISO 12947-2 1998
SOLIDEZ DE LOS COLORES A LA LUZ Colour fastness to light / Résistance à la lumière	5	UNE 40187 BS 1006-B02
SOLIDEZ A LA LIMPIEZA EN SECO Rubbing solvents / Résistance au nettoyage à sec	5	ISO 105-D01 UNE 40099
SOLIDEZ DE LOS COLORES AL LAVADO Rubbing fastness in humid state / Résistance au nettoyage	5	ISO 105-C06 UNE 40029
RESISTENCIA AL PILLING Pilling resistance / Résistance au pilling	4-5	ISO/DIS 12945-2
INSTRUCCIONES DE LAVADO Washing instructions / instructions de lavage		

texas.

COMPOSICIÓN Composition / Composition	55% PES. 40% PU. 5% ALG.	
ANCHO Width / Largeur	140 cm · 54 in.	
ESPESOR thickness / épaisseur	1.4mm	
PESO Weight / Poids	910 gr/m ² · 650 gr/ml	
RESISTENCIA DE LAS COSTURAS Seam strength / Résistance des coutures	Urdimbre Warp Châine 3.1 mm Trama Weft Trame 3.1 mm	EN ISO 13936-2 EN ISO 13936-2
RESISTENCIA A LA ABRASIÓN Abrasion resistance / Résistance à l'abrasion	> 60.000 Ciclos Cycles Cycles	EN ISO 12947-1/-2
RESISTENCIA A LA ROTURA Breaking strength / Résistance à la déchirure	Urdimbre Warp Châine 729.0N / 181% Trama Weft Trame 687.0 N / 29.9%	EN ISO 13934-1 EN ISO 13934-1
RESISTENCIA DE ROTURA AL RASGADO Tear strength / Résistance à la déchirure	Urdimbre Warp Châine 56.6 N Trama Weft Trame 46.7 N	EN ISO 13937-3 EN ISO 13937-3
SOLIDEZ DE LOS COLORES A LA LUZ Colour fastness to light / Résistance à la lumière	4-5	EN ISO 105-B 02
SOLIDEZ A LA LIMPIEZA EN SECO Rubbing solvents / Résistance au nettoyage à sec	4-5	EN ISO 105-X12
SOLIDEZ DE LOS COLORES AL LAVADO Rubbing fastness in humid state / Résistance au nettoyage	4-5	EN ISO 105-X12
RESISTENCIA AL PILLING Pilling resistance / Résistance au pilling	4-5	ISO/DIS 12945-2
INSTRUCCIONES DE LAVADO Washing instructions / instructions de lavage		

estepa.

COMPOSICIÓN Composition / Composition	60% PAC. 40% PES.	
ANCHO Width / Largeur	140 cm · 54 in.	
PESO Weight / Poids	385 gr/m ²	
RESISTENCIA DE LAS COSTURAS Seam strength / Résistance des coutures	Urdimbre Warp Châine 1.8 mm Trama Weft Trame 2 mm	BS 3320:1988 BS 2543:1995
RESISTENCIA A LA ABRASIÓN Abrasion resistance / Résistance à l'abrasion	> 32.000 Ciclos Cycles Cycles	BS 5690 BS 2543:1995
SOLIDEZ DE LOS COLORES A LA LUZ Colour fastness to light / Résistance à la lumière	5	UNE 40187 BS 1006-B02
SOLIDEZ A LA LIMPIEZA EN SECO Rubbing solvents / Résistance au nettoyage à sec	5	ISO 105-D01 UNE 40099
SOLIDEZ DE LOS COLORES AL LAVADO Rubbing fastness in humid state / Résistance au nettoyage	5	ISO 105-C06 UNE 40029
RESISTENCIA AL PILLING Pilling resistance / Résistance au pilling	4-5	ISO/DIS 12945-2
INSTRUCCIONES DE LAVADO Washing instructions / instructions de lavage		

cuidado de los tejidos.

instrucciones de lavado / washing instructions / instructions de lavage



Lavado a máquina, máximo a 30° C con detergentes neutros. Hand wash, maximum 30° C with neutral detergents. Lavage à la main, un maximum de 30° C avec un détergent neutre.



No arrugar, retorcer ni centrifugar. Do not squeeze, wring or spin-dry. Ne pas presser ou essorer.



No usar lejía. Do not use bleach. Ne pas utiliser eau de javel.



Planchar por la cara posterior, máxima 110°. Iron only on the rear side, at a maximum of 110°. Repasser par la face de derrière, 110° au maximum.



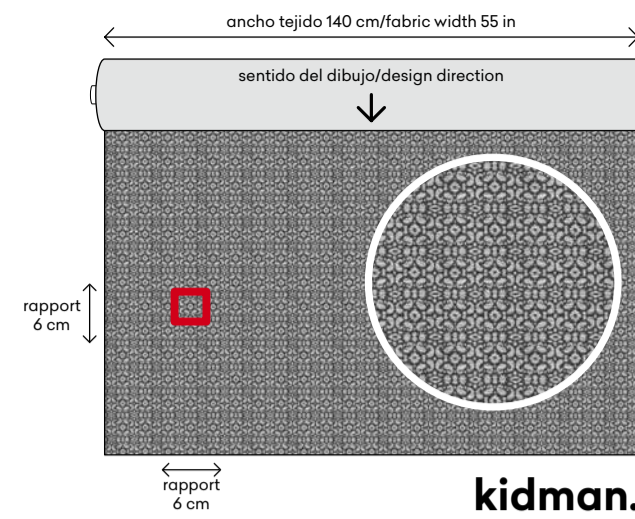
Puede utilizarse el lavado en seco. Dry cleaning can also be used. Nettoyage à sec peut être utilisé.



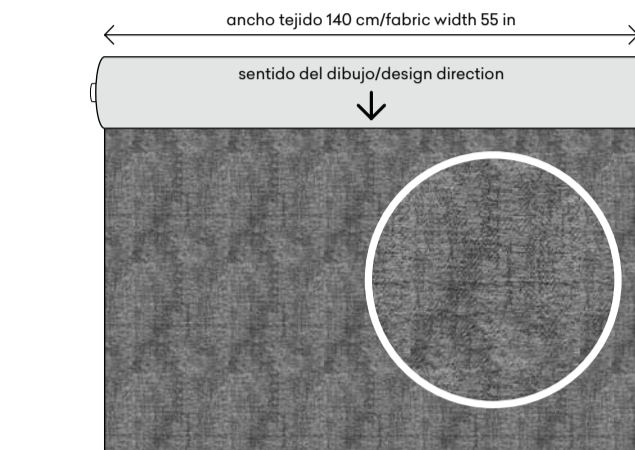
Evitar secar al sol. Avoid drying in the sun. Éviter sécher au soleil.



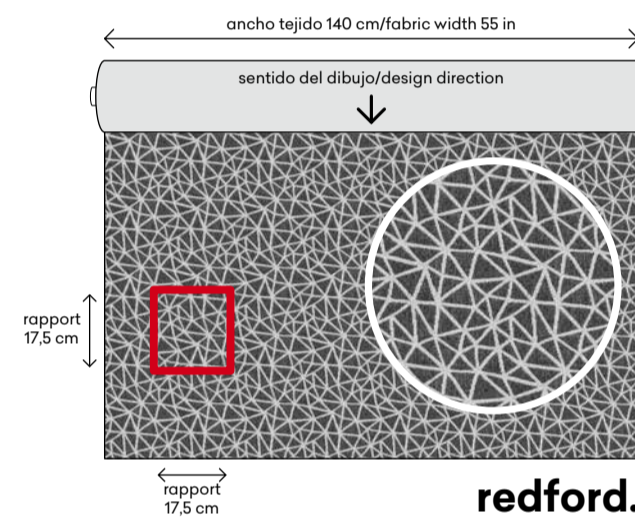
No secar en secadora. Do not tumble dry. Ne pas sécher en machine.



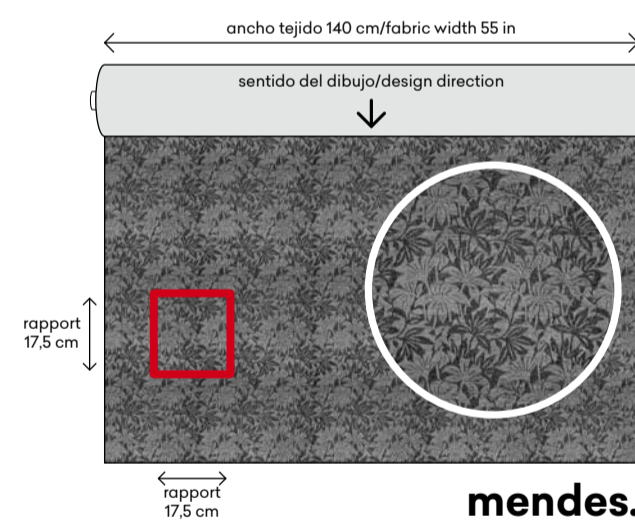
kidman.



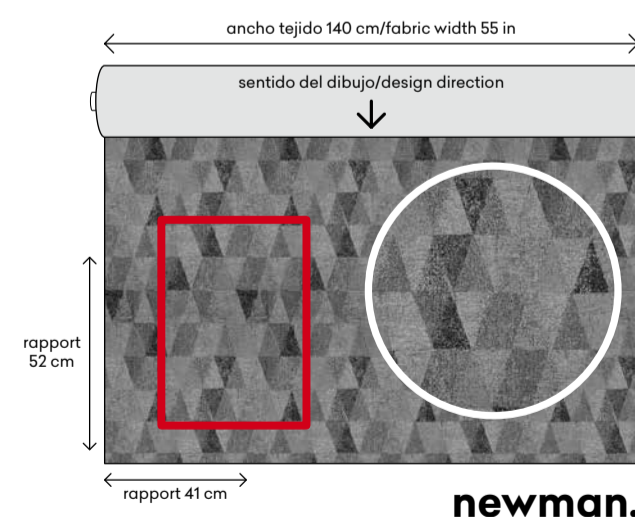
costner.



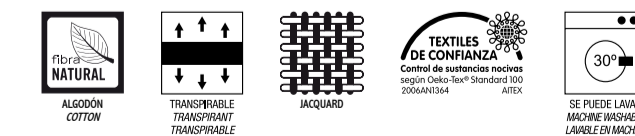
redford.



mendes.



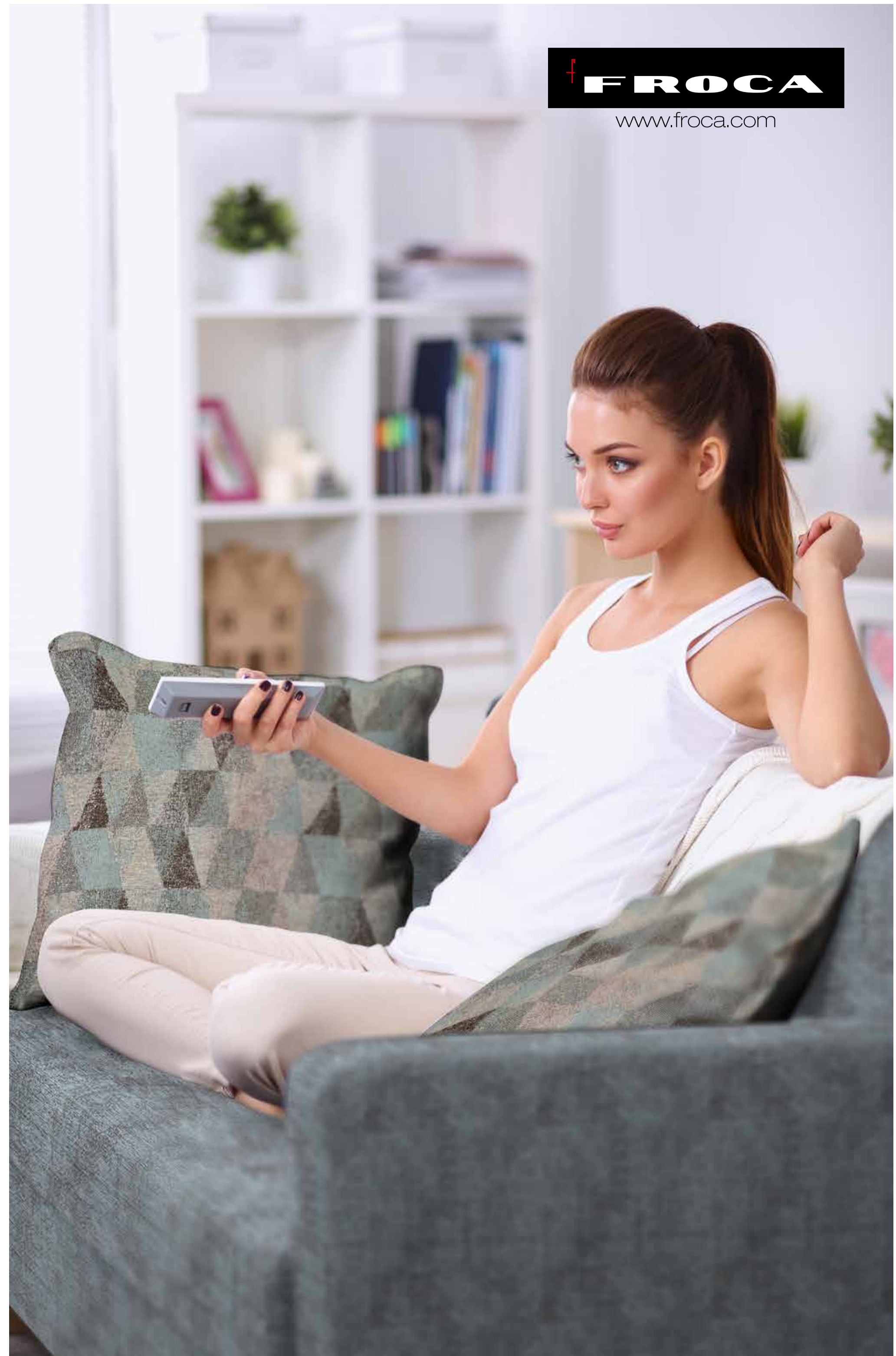
newman.



www.froca.com



www.froca.com



PERFECT
FABRICS.

 **FROCA**

www.froca.com